



SRINAKHARINWIROT UNIVERSITY
AT BANGSAEN



The university symbol shows a circle with a graph of the exponential function, $y = e^x$, inside it. The X axis represents time, while the Y axis represents growth or development, and e represents a fixed number. The exponential function signifies that development which increases in relation to time is never-ending, and symbolically moves ever-higher. The university motto, in Pali, “Sika Wirunhi Sampatta”, means “education is growth.”

The university colors are gray and gold. Gray is considered the color of the brain and gold is goodness. Together the colors mean “to be good and knowledgeable.”

History



Srinakharinwirot University at Bangsaen is the first university-level educational institution set up in the province. Established on July 8, 1955, the University initially was a College of Education. From this college, thousands of graduates took teaching posts in schools all over the country.

It was in 1974 that the College became a university under

the Srinakharinwirot University Act B.E. 2517 so that it could expand its educational activities to cover other academic fields. This is a milestone in the history of the university as many faculties have been opened since then. The name, Srinakharinwirot, was given by His Majesty King Bhumibol Adulyadej. It means “a university which is the glory of the city”.

Administration



Srinakharinwirot University is a state institution under the jurisdiction of the Ministry of University Affairs. It is financed mainly through annual government budget. There are eight campuses in the Srinakharinwirot University System, four of which are in Bangkok. Bangsaen campus is the largest in term of area (230 acres) and second in student popu-

lation. The University Council is the highest organization of the university. The President is the chief administrator and the executive officer of the University Council. The President who is in Bangkok has jurisdiction over all campuses. His authority is delegated to the Vice President of the campus, however, for effective administration. The Vice

President of the campus, therefore, is the chief administrator of his campus. He is assisted by deputy vice presidents in different areas. At Bangsaen, there are

seven: Administration, Academic Affairs, Student Affairs, Planning and Development, Special Affairs, International Cooperation, and Buildings and Ground.

Admission



Admission is open to all secondary school graduates, and is determined by entrance examination administered annually by the Ministry of University Affairs.

However, being an only University of the Eastern Region, Srinakharinwirot has an admission quota, which is about half of the incoming freshmen, for students

in the region. This is to broaden educational opportunities of local students and to encourage them to work in the region after graduation.

University Session

First Semester - June to October
Second Semester - November to March
Summer Session - April to May

Curricula



The University offers courses for bachelor's and master's degrees in the following faculties.

Faculty of Education

Bachelor of Education (B.-Ed.) in Biology, Chemistry, Physics, Mathematics, Physical and

Biological Sciences, Elementary Education, Educational Technology, Thai, English, Art, Home Economics, Library Science, Social Sciences, and Physical Education.

Faculty of Science

Bachelor of Science (B.Sc.) in Physics, Chemistry, Biology, Aquatic Science, and Mathematics.

Faculty of Humanities

Bachelor of Arts (B.A.) in Thai Language and Literature, and English Language and Literature.

Faculty of Social Sciences

Bachelor of Science (B.Sc.) in Geography and Bachelor of Arts (B.A.) in History.

Faculty of Physical Education

Bachelor of Science (B.Sc.) in Physical Education.

Faculty of Nursing Science

Bachelor of Nursing Science (B.N.Sc.) in Nursing.

The Graduate School

Master of Education (M.Ed.) in Biology, Educational Administration, Elementary Education, and Counseling Psychology.

The Marine Science Institute

Locating close to the Gulf of Thailand, Srinakharinwirot University at Bangsaen has long been interested in marine science. The University established the Zoological Museum and Marine Aquarium in 1969. It had been gradually developed to the full and possible extent. When the facilities became too small to accommodate increasing visitors and collections, the University requested and was given a Grant Aid in 1981 total-

ing 230 million baht from the Government of Japan to construct a new marine science center. The center was completed and taken charge of by the University in 1983, and His Majesty the King graciously presided over the opening ceremony on July 24, 1984.

The Marine Science Institute consists of three main components as follows:

1. Marine Science Museum



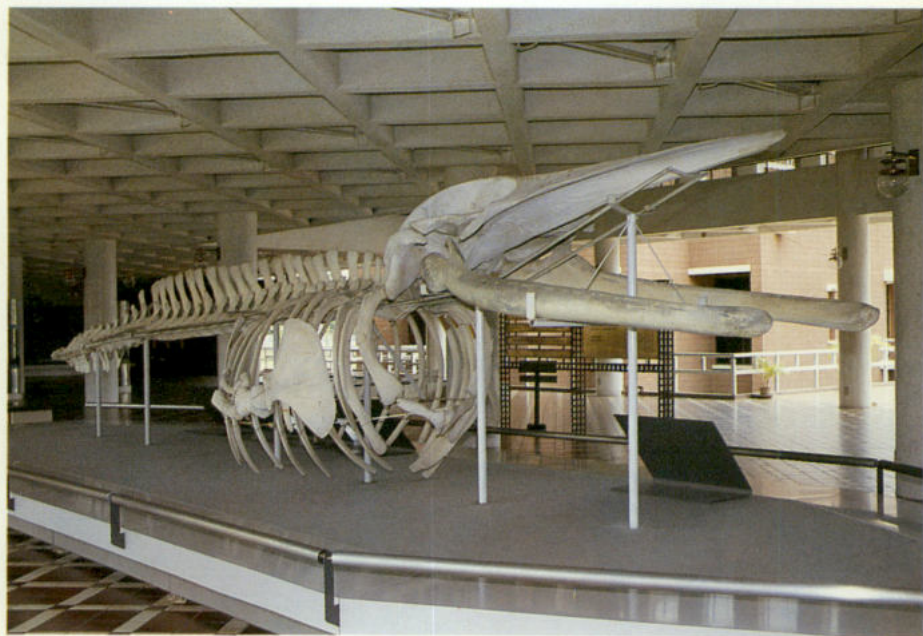
2. Marine Aquarium
3. Marine Science Laboratories

1. Marine Science Museum

Located on the second floor of the center building is Marine Science Museum where a collection of specimens and replicas of marine animals and plants are kept and show cases of animal life cycles, fishing equipment, survey equipment, marine resources, and marine ancient ruins are exhibited.

2. Marine Aquarium

This is where the collection of marine animals are reared and exhibited in 44 indoor display tanks. The capacity of these tanks is ranged from half a ton to 200 tons. The indoor display tanks of the aquarium are classified various categories-animals in tidal zone, marine invertebrate, economic fish, beautiful fish, dangerous fish, strange fish, coral life, symbiosis, etc.



3. Marine Science Laboratories

Sixteen laboratories provided for marine science research are as follows:

1. Oceanography
2. Chemistry
3. Biochemistry
4. Physiology
5. Microbiology
6. Taxonomy I
7. Taxonomy II
8. Electron microscope room
9. Pathology
10. Ecology I
11. Ecology II
12. Phytoplankton
13. Zooplankton
14. Aquaculture I
15. Aquaculture II
16. Instrument room

The Campus



Srinakharinwirot University at Bangsaen is in Chonburi Province and located adjacent to the famous Bangsaen Beach, 45 kilometers from Pattaya, and only 80 kilometers from Bangkok. The campus is lined with trees and shrubs, and ornamented by large green areas and picturesque ponds:

Facilities include lecture halls, classroom buildings and laboratories, and auditorium, a dining hall, the central library, a computer service center, a post office, a co-op store, and a university bookstore.

Enrollment

First Semester 1985

| Faculties | Total | Men | Women |
|--------------------|-------|-------|-------|
| Education | 1,188 | 427 | 761 |
| Humanities | 234 | 42 | 192 |
| Science | 309 | 154 | 155 |
| Social Sciences | 205 | 86 | 119 |
| Nursing Science | 112 | 5 | 107 |
| Physical Education | 125 | 84 | 41 |
| Graduate School | 217 | 144 | 73 |
| Evening School | 1,208 | 419 | 789 |
| Total | 3,598 | 1,361 | 2,237 |



Faculty

There are over 170 faculty and most of them have at least master's degrees. Also there are 3 expatriate instructors of English.

Medium of Instruction

Thai is the medium of instruction in practically all courses. English is also used in certain upper-division and graduate courses, but to a limited extent. However, most students know some English.

Accommodations

The University provides accommodations for faculty members, students, and staff personnel. There are over 100 houses and several apartment buildings for faculty members. So most of

the faculty live on campus. Students live in dormitories, 10 for men and 10 for women.

Also there are accommodations for visiting scholars.



Student Life



Because most students live on campus, the University encourages students to take part in extracurricular activities. There are many student clubs covering a wide range of interests such as music, religion, social works, and sports. The University Student Center building provides office space for student clubs.

Srinakharinwirot University at Bangsaen is very fortunate in having comparatively good sports facilities for students and staff. There are over 20 sports fields and courts such as football fields, rugby and hockey fields, and tennis and badminton courts. Also there are gymnasiums and an olympic-size swimming pool.

There is an Alumni Club which was established to support University activities, and provide services to the community and the alumni. The Club maintains a

scholarship funds for needy students and also contributes funds for other educational purposes. The club office is in its own building on campus.

Thanphuying Praphasri Kamlang-ek Medical Service Center

Named after the late wife of the benefactor, Gen. Arthit Kamlang-ek, the Supreme Commander of the Royal Thai Armed Forces.

The Center now has a doctor, a dentist, a pharmacist, nurses, and a lab technician on duty every day. These staff live in the housing nearby so they can be on call in case of emergency. There is also an ambulance for referral service.



Future Plan

As the only university in the Eastern Region, Srinakharinwirot University at Bangsaen has been an active partner in the development of the Region. Besides teaching, it also engages in research, community services, and the preservation and support of art and culture. It hopes to play an even more active role in the years to come since the Royal Thai Government has started the billion U.S. dollars Eastern Seaboard Development Program. Accordingly, the three Provinces in the area; Chonburi, Rayong, and Chachoengsao, will be affected physically and socially. The University therefore is adapting and adjusting itself for the near future.

New faculties have been planned to meet the developmental needs of the Region. These are faculties of Applied Science

and Technology, Health Sciences, Management Science, Aquatic Science, and Medicine. Adding these faculties to the University will serve two purposes:

1. There can be a reciprocity with the Eastern Seaboard industries whereby industries support University's research and other academic activities, and the University responds to the industries' needs in research and development, and manpower training.

2. It will accord the national policy objective to decentralize from Bangkok and form a major growth center in the Eastern Seaboard. By providing good education at the tertiary level and good health care will make the area residents satisfy, and willing to stay on.

For further information
Contact :

Vice President
Srinakharinwirot University
Bangsaen, Chonburi 20131
THAILAND